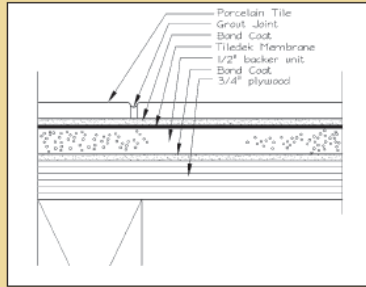
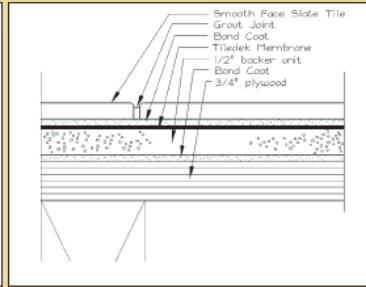


TILEDEK ASSEMBLY CHART

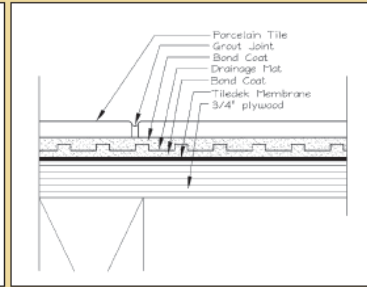
ASSEMBLY #1



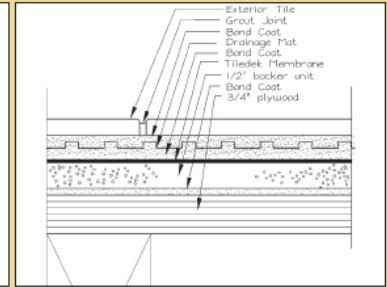
ASSEMBLY #2



ASSEMBLY #3



ASSEMBLY #4



Tiledek Reference

UFT 2008-08 / TD-1

UFT 2008-09 / TD-2

UFT 2008-010 / TD-3

TD-4

Exterior Application

over living area
over non-living area

✓
✓

✓
✓

✓

✓
✓

Performance / service duty

extra heavy
heavy
moderate (commercial & light institutional)
light (commercial)
residential

✓
✓
✓
✓

✓

✓

✓

Sub Floor

plywood
concrete

✓
1) ✓

✓
1) ✓

✓
1) ✓

✓
1) ✓

Outdoor Tile

porcelain
slate

✓

3) ✓

✓

✓

Drainage Layer

2)

2)

✓

2)

Note:

- 1) ASTM C-627 tests conducted on a wood framed deck assembly. Assume similar "Performance" on a concrete deck assembly with similar structural capabilities
- 2) Assembly #3 assembly included a "drainage layer" & achieved a "Residential - Performance" rating. Assume a similar "Residential - Performance" rating if the same drainage layer included in assemblies #1, #2 & #4.
- 3) Natural stone must be gauged with minimum tolerance. Uneven stones cannot be levelled when using a thin set mortar bed.