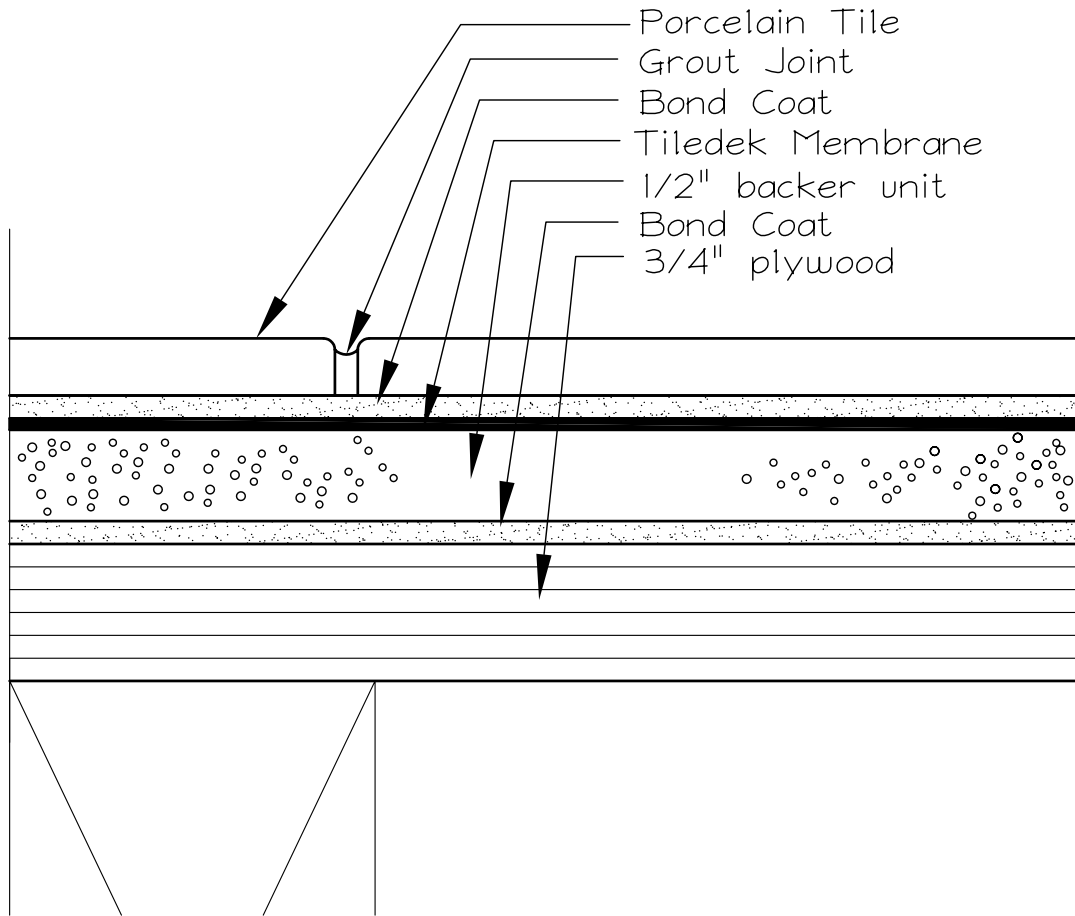


TILEDEK ASSEMBLY WITH PORCELAIN TILE

ASTM C-627 TESTED ASSEMBLY- HEAVY RATING
FOR FULL DESCRIPTION SEE TTMAC REPORT UFT 2008-08



NOTE: AS A SUPPLIER OF FINISHED PRODUCT ONLY, DURADEK LTD. DOES NOT ASSUME RESPONSIBILITY FOR ERRORS IN DESIGN, ENGINEERING, OR DIMENSIONS. THE ARCHITECT, ENGINEER, SPECIFIER, CONTRACTOR OR OWNERS' REPRESENTATIVE MUST VERIFY ALL DIMENSIONS, SIZES & SUITABILITY OF DETAILS.

DURADEK LTD.

CANADA
UNITED STATES

Bus: (604) 591-5594
Bus: (816) 421-5830

Fax: (604) 591-3100
Fax: (816) 421-2924

SYSTEM:
TILEDEK SYSTEM

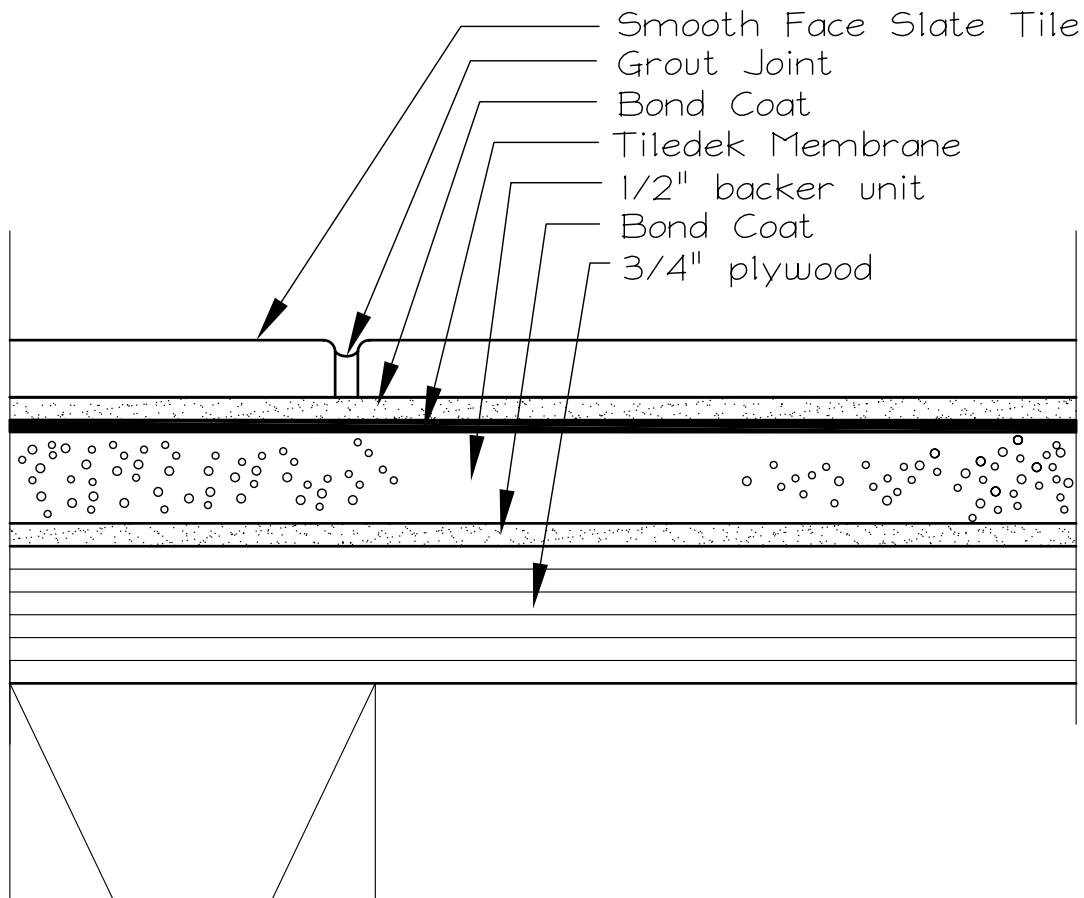
DATE: **31/03/09**
REV. DATE:

DRAWING No.:
TD-1



TILEDEK ASSEMBLY: WITH SLATE TILE

ASTM C-627 TESTED ASSEMBLY- RESIDENTIAL RATING
FOR FULL DESCRIPTION SEE TTMAC REPORT UFT 2008-09



NOTE: AS A SUPPLIER OF FINISHED PRODUCT ONLY, DURADEK LTD. DOES NOT ASSUME RESPONSIBILITY FOR ERRORS IN DESIGN, ENGINEERING, OR DIMENSIONS. THE ARCHITECT, ENGINEER, SPECIFIER, CONTRACTOR OR OWNERS' REPRESENTATIVE MUST VERIFY ALL DIMENSIONS, SIZES & SUITABILITY OF DETAILS.

DURADEK LTD.

CANADA
UNITED STATES

Bus: (604) 591-5594
Bus: (816) 421-5830

Fax: (604) 591-3100
Fax: (816) 421-2924

SYSTEM:
TILEDEK SYSTEM

DATE: **31/03/09**
REV. DATE:

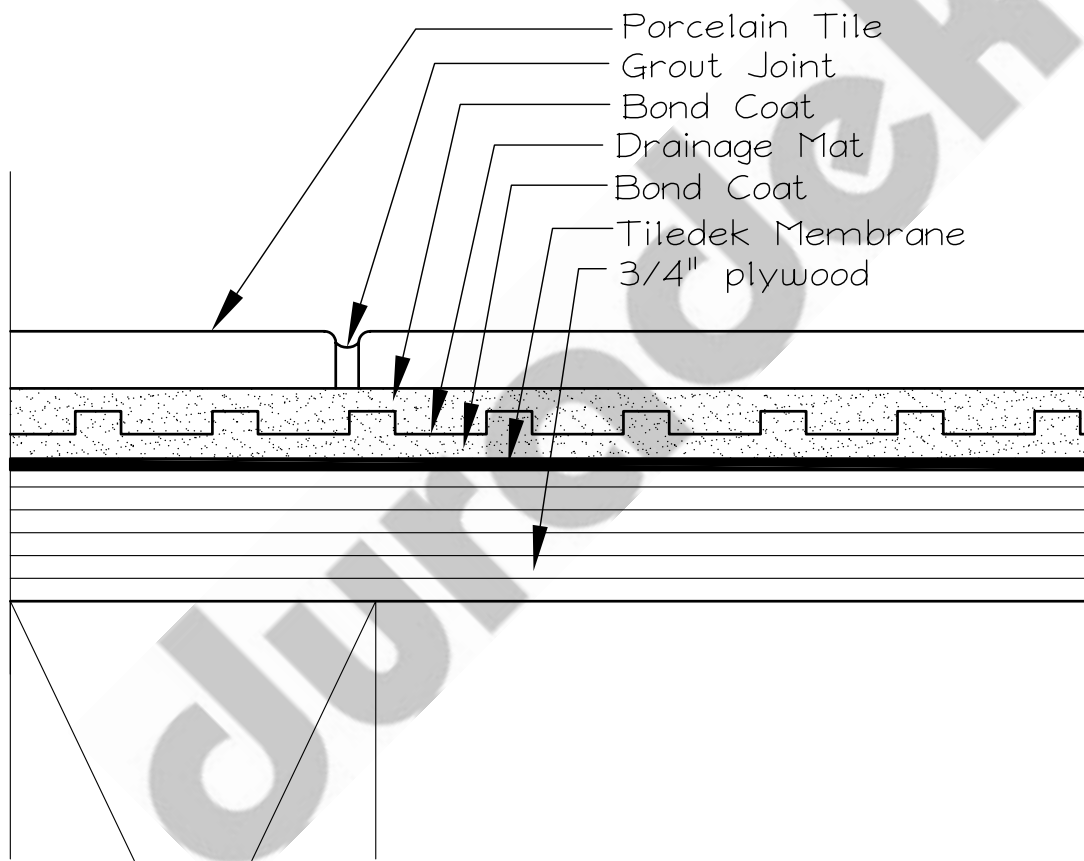
DRAWING No.:
TD-2



TILEDEK ASSEMBLY: WITH PORCELAIN TILE & DRAINAGE MAT
 (FOR APPLICATIONS OVER OCCUPIED SPACE)

(FOR APPLICATIONS OVER UNOCCUPIED SPACE
 REFER TO ASSEMBLY DRAWING TD-4)

ASTM C-627 TESTED ASSEMBLY- RESIDENTIAL RATING
 FOR FULL DESCRIPTION SEE TTMAC REPORT UFT 2008-010



NOTE: AS A SUPPLIER OF FINISHED PRODUCT ONLY, DURADEK LTD. DOES NOT ASSUME RESPONSIBILITY FOR ERRORS IN DESIGN, ENGINEERING, OR DIMENSIONS. THE ARCHITECT, ENGINEER, SPECIFIER, CONTRACTOR OR OWNERS' REPRESENTATIVE MUST VERIFY ALL DIMENSIONS, SIZES & SUITABILITY OF DETAILS.

DURADEK LTD.

CANADA
 UNITED STATES

Bus: (604) 591-5594
 Bus: (816) 421-5830

Fax: (604) 591-3100
 Fax: (816) 421-2924

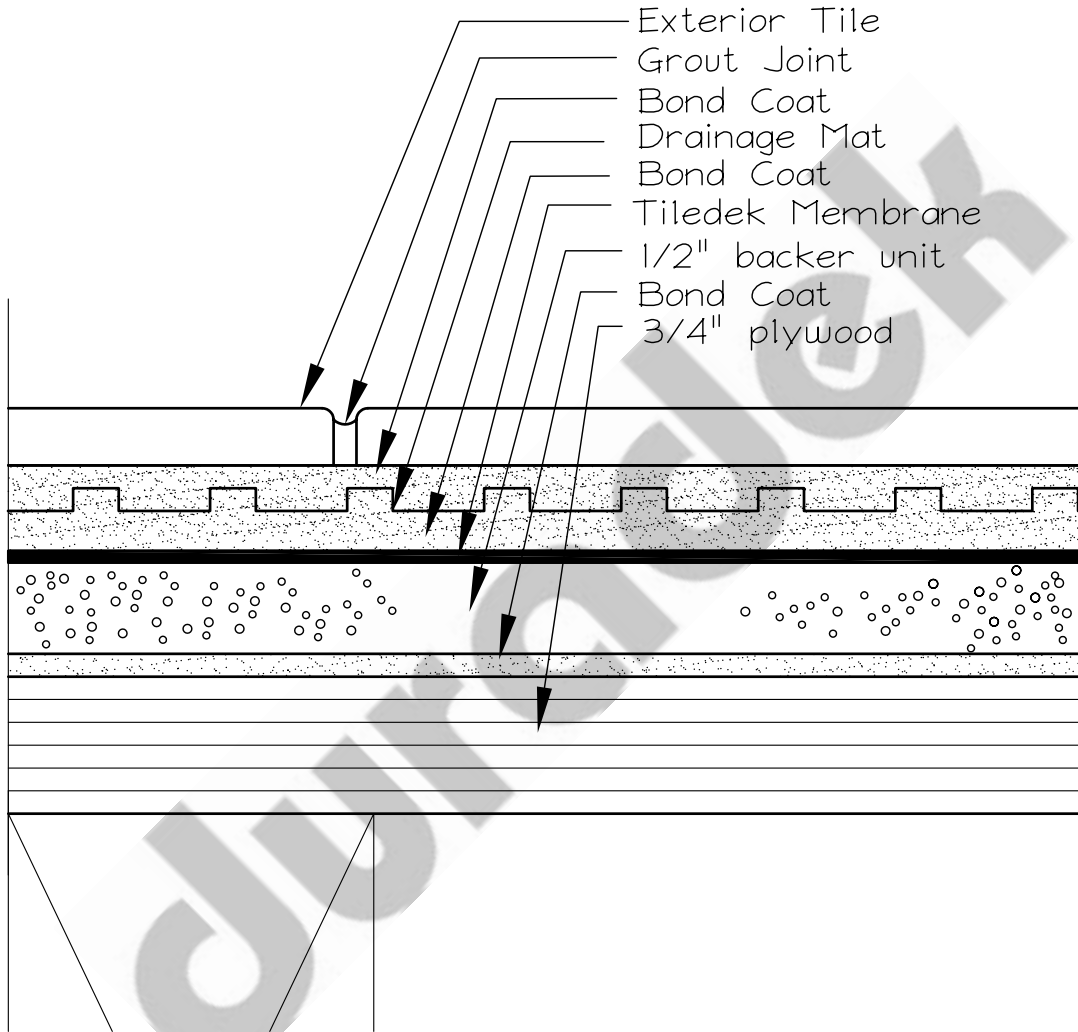
SYSTEM:
TILEDEK SYSTEM

DATE: **31/03/09**
 REV. DATE:

DRAWING No.:
TD-3



TILEDEK ASSEMBLY: WITH DRAINAGE MAT & CBU (BACKER UNIT)



NOTE: AS A SUPPLIER OF FINISHED PRODUCT ONLY, DURADEK LTD. DOES NOT ASSUME RESPONSIBILITY FOR ERRORS IN DESIGN, ENGINEERING, OR DIMENSIONS. THE ARCHITECT, ENGINEER, SPECIFIER, CONTRACTOR OR OWNERS' REPRESENTATIVE MUST VERIFY ALL DIMENSIONS, SIZES & SUITABILITY OF DETAILS.

DURADEK LTD.

CANADA
UNITED STATES

Bus: (604) 591-5594
Bus: (816) 421-5830

Fax: (604) 591-3100
Fax: (816) 421-2924

SYSTEM:
TILEDEK SYSTEM

DATE: **11/06/09**
REV. DATE:

DRAWING No.:
TD-4

