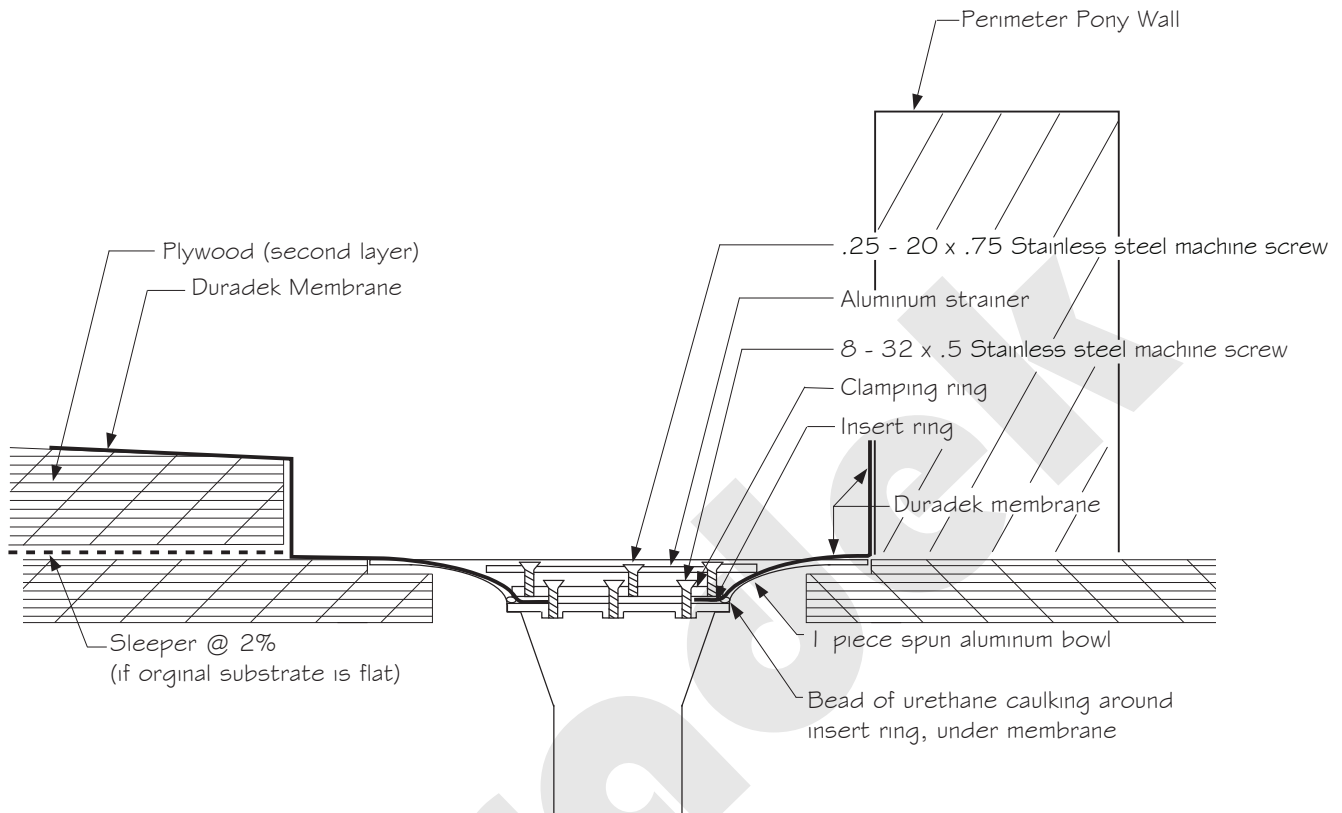


## Trough Drain Detail - with Aluminum DD2/DD3 Deck Drain



### Installation Notes:

- A second layer of plywood is necessary to create a trough. If the original layer of plywood is sloped appropriately, just adhere second layer directly on top of first layer. If original layer of plywood is flat, apply sloped sleepers and attach second layer of plywood to the sleepers.
- Drain flange to be countersunk into plywood deck approximately 1/8".
- Drain body is attached to plywood with 6 x #8 x 1 1/2" screws (or roofing nails). Countersink screw heads with 3/8" high speed countersink drill bit (nic). File off burrs (on back side) created from drilling process.
- Attach drain body to drain pipe with "M-J" coupling (nic). Coupling available in stepped sizes for attachment to both larger and smaller diameter drain pipes (By others).
- Remove strainer and clamping ring before laying in vinyl.
- Apply bead of urethane caulking at bottom edge of insert ring.
- Install clamping ring with (3) screws supplied. Wipe off excess caulking if necessary.
- Install drain cover with (3) screws supplied.

### NOTE:

AS A SUPPLIER OF FINISHED PRODUCT ONLY, DURADEK DOES NOT ASSUME RESPONSIBILITY FOR ERRORS IN DESIGN, ENGINEERING, OR DIMENSIONS. THE ARCHITECT, ENGINEER, SPECIFIER, CONTRACTOR OR OWNERS' REPRESENTATIVE MUST VERIFY ALL DIMENSIONS, SIZES, AND SUITABILITY OF DETAILS, AND ARE IN ACCORDANCE WITH GOVERNING BUILDING CODES.

**DURADEK LTD.**

CANADA  
UNITED STATES

Tel: (604) 591-5594  
Tel: (816) 421-5830

Fax: (604) 591-3100  
Fax: (816) 421-2924

SYSTEM:  
ALL ASSEMBLIES

DATE: 11/15/21  
REV. DATE:

DRAWING No:  
DR-06